

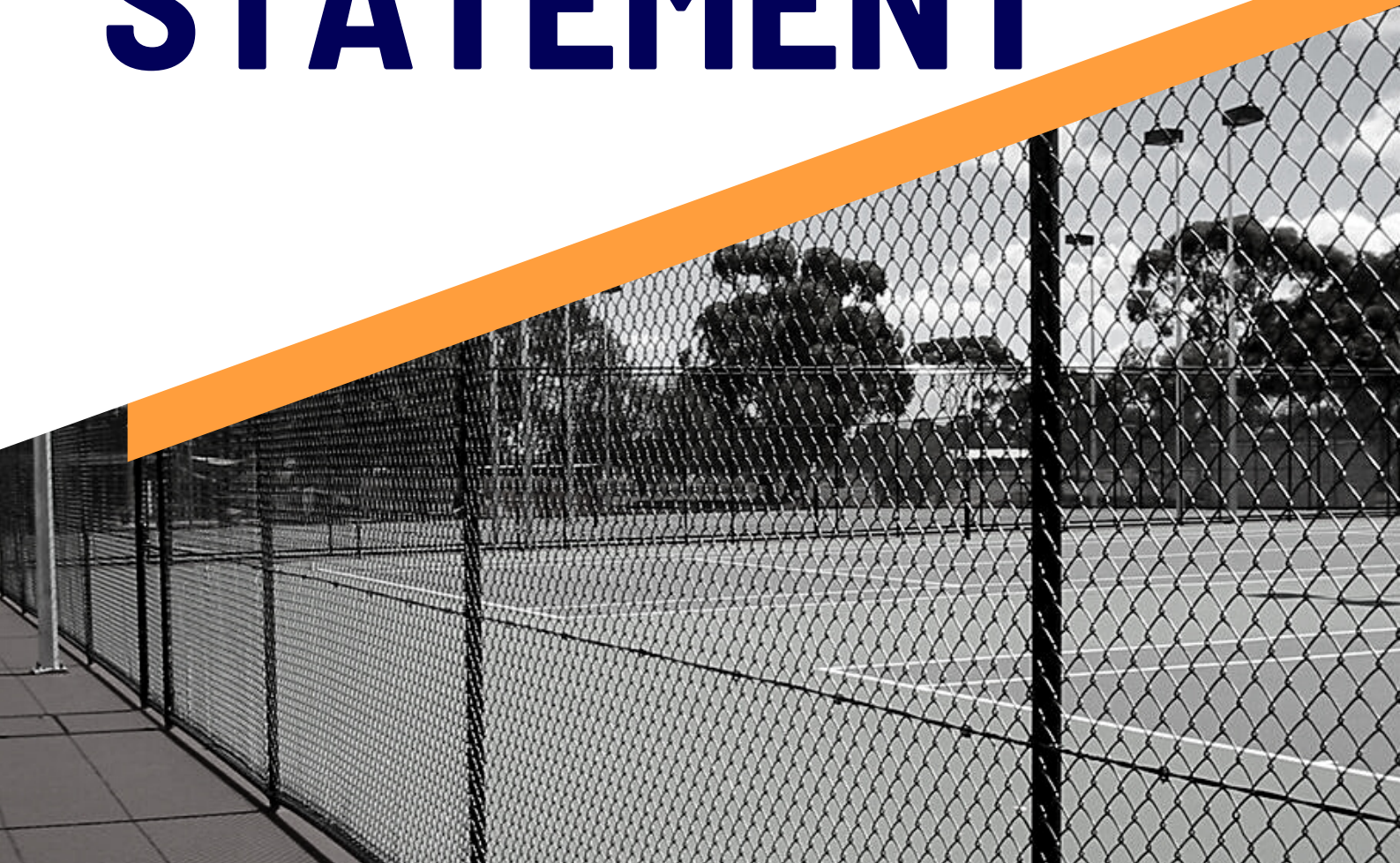
**BUILT BY**



**CONTRACTING**

**Quality Contracting for Every  
Application**

# **CAPABILITY STATEMENT**



**Over 32 Years of Contracting Experience and Service Excellence**



## ABOUT US

"At Built By Geoff we endeavour to work safely and productively for all our clients.

We deliver our services with a sense of urgency and to the highest standard due to our consistant training and development of our local staff."



### Damen Tasker

Damen was born in Kalgoorlie and has lived in the Goldfields for 36 years. Damen started an apprenticeship at age 15 in fixed and mobile plant mechanics. He stayed mostly to the mobile plant mechanic side of the trade. After completing his apprenticeship, he carried on in the mining industry working his way up to the Underground Maintenance Superintendent level.

Damen eventually moved into open pit mining and was employed by KCGM as the Superpit Maintenance Contract Manager, managing major clients with multi million dollar deals.



### Garry Sidebottom

Garry Sidebottom is a born and bred local. Garry has been an Engineering Tradesman - Mechanical for a number of years from the Goldfields to the Pilbara, and internationally.

Running Built by Geoff with Damen, he is looking to further Built By Geoff's portfolio with a number of contacts in all minesite related fields.

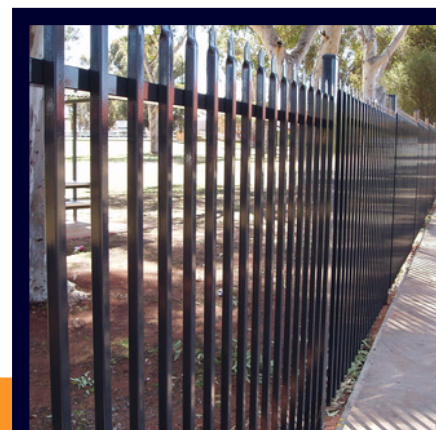
With a young family, Garry's roots are well established here in the Goldfield's region.



# TRUSTED & EXPERIENCED IN FENCING

## COMPANY OVERVIEW

- ✓ Built by Geoff brings quality craftsmanship, professionalism, experience and project management skills that enable us to provide full project management on a wide range of fencing and gate solutions.
- ✓ At Built By Geoff we understand that each clients requirements are unique and we provide solutions to meet their specifications.
- ✓ Over 32 years of experience in manufacturing, installing and providing Australian made fences and gates.
- ✓ Extensive range of fencing solutions for clients, including large scale and remote projects
- ✓ Supporting other local businesses and employing local people.
- ✓ Supporting local sporting teams and charities.
- ✓ All constructions of high security fencing completed, comply with Australian Standards.



# SOLUTIONS TO MEET YOUR NEXT PROJECT

## SERVICES PROVIDED

**Built By Geoff provides a range of services including consulting, design, construction, installation and maintenance**

- ✓ Project management - construction.
- ✓ Engineering and mechanical solutions.
- ✓ Full-service fencing company, start to finish for all residential, commercial and industrial properties.
- ✓ Supply of all industrial steel requirements with a wide range of galvanised pipe and RHS stocked.
- ✓ High security - chain mesh, garrison fencing, palisade fencing, Colorbond and pool fencing.
- ✓ Automation systems, custom built sliding and swing gate.
- ✓ Temporary fencing for hire or purchase.
- ✓ With a custom-built drill rig, we can provide a wide range of drilling services, including, but not limited to earth stake holes up to 20m, hard rock drilling.

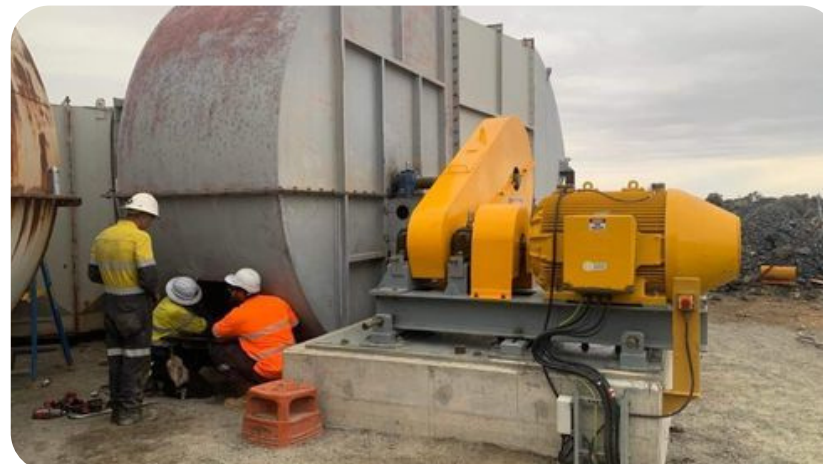
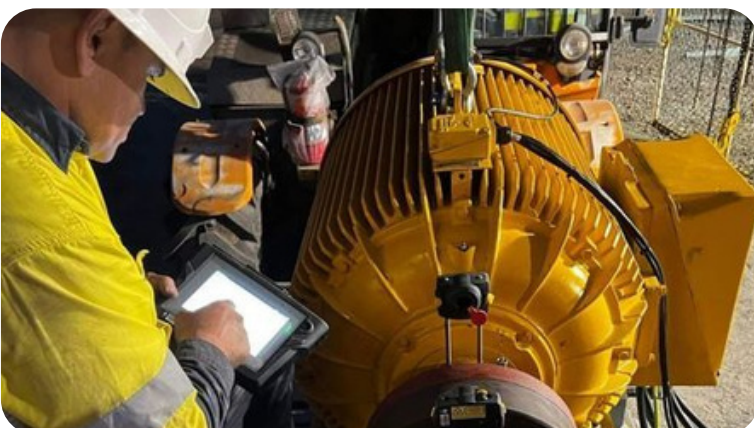


# DEADLINES AND QUALITY

## NOTEABLE PROJECTS

**Built By Geoff delivers projects for a range of sectors from mining, government, commercial and residential**

- Project managed underground primary vent fan - refurbishment and installation
- Start to finish installation of industrial shed.
- Site cleared earthworks.
- 10km Of high security fence completed in 8 weeks.
- Remote exploration drilling, fully self sufficient.





# OUR DRILLING CAPABILITIES

## TD001

This machine offers minimal footprint to the environment with a total length of 8.5m and 2.5m wide super singles all around with 4x4, making it a very capable rig in any terrain.

This rig is set up with an onboard compressor pushing 200psi @ 400cfm with Aircore and Slimline RC to 104m

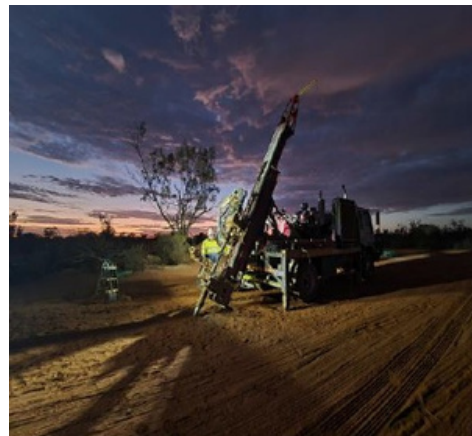
- Cyclone splitting options
- Rotary splitter
- Rotary cone splitter
- Cone splitter



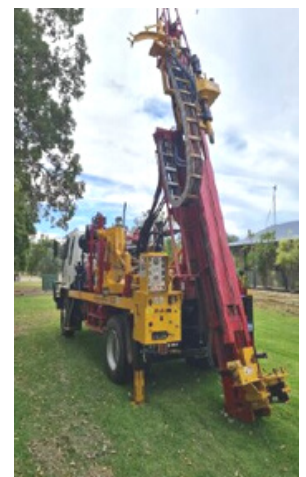
## RIG2

This machine is 9m in total length and 2.5m wide with onboard compressor, pushing 250psi @ 500cfm with Aircore and Slimline RC to 116m.

- Cyclone splitting options
- Rotary splitter
- Rotary cone splitter
- Cone splitter



Both of these machines are set up for remote drilling, including a camp kitchen and sleeping quarters available.







## FOR MORE INFORMATION



[admin@builtbygeoff.com.au](mailto:admin@builtbygeoff.com.au)



11 Williams Street, Kalgoorlie,  
WA, 6430



(08) 9021 8755

[www.builtbygeoff.com.au](http://www.builtbygeoff.com.au)